

Second Normal Form

Objectives

- Define the rule of Second Normal Form in the normalization process
- Examine a nonnormalized entity and determine which rule (or rules) of normalization are being violated.
- Apply the rule of Second Normal Form to resolve a violation in the model

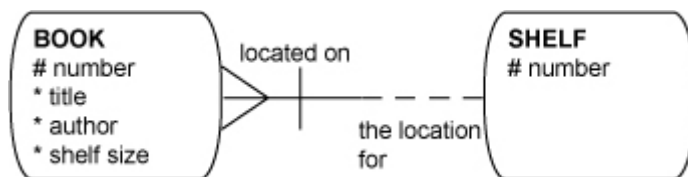
Vocabulary

Directions: Identify the vocabulary word for the definition below.

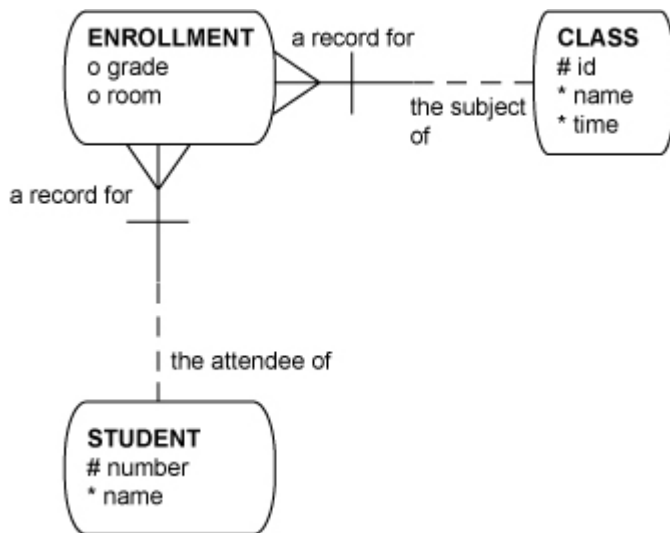
1. _____ The output of the second step of database normalization
2. _____ The output of the second step of database normalization

Try It / Solve It

1. The identifier of a library book includes its shelf location. Does this ERD follow the rules of Second Normal Form? If you spot a violation, correct it.



2. Class Enrollment is the intersection entity that resolves the M:M between STUDENT and CLASS. Does the ERD follow the rules of Second Normal Form? If you spot a violation, correct it.



3. A store can be located in several shopping malls, and a shopping mall may house several stores. To locate a particular store in a specific neighborhood, you will need to know the name and address of the nearby shopping mall, plus the name of the store. Does the ERD follow the rules of Second Normal Form? If you spot a violation, correct it.

