

Matrix Diagrams

Objectives

- Identify relationships using a matrix diagram
- Draw an ERD from a matrix diagram

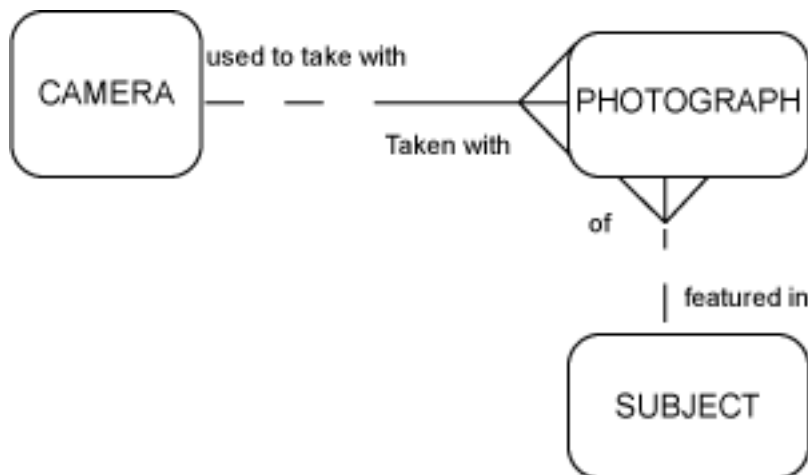
Vocabulary

Directions: Identify the vocabulary word for the definition below.

1. _____ A grid- like drawing that can be used to discover and record relationships between entities in an entity-relationship model

Try It / Solve It

1. Read the business scenario and review the ERD. Using the matrix diagram, make up two or more possible relationships between PHOTOGRAPH and the other entities that make sense for the business.



"Im an amateur photographer. I own several cameras and am always taking pictures of different subjects. Im trying to keep track of which camera and type of film perform best under certain conditions -- indoor light, outdoor light, etc. So when I have my films developed, I note down which camera I used. When the pictures come back, I note the subject and conditions. Each picture always features

one subject. A subject could be a view, a person or group of persons, or an object or group of objects."

	CAMERA	PHOTOGRAPHY	SUBJECT
CAMERA			
PHOTOGRAPHY			
SUBJECT			

2. Given the matrix diagram below, construct an ERD.

*****	Cross Country Runner	City For Race	Race Type
Cross Country Runner	*****		
City For Race		*****	
Race Type			*****