

Speaking ERDish and Drawing Relationships

Objectives

- State relationships between entities in precise words (ERDish)
- Draw and label relationships correctly on an ERD

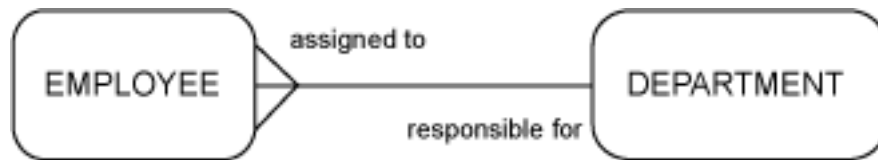
Vocabulary

Directions: Identify the vocabulary word for the definition below.

1. _____ The language or statements used to describe relationships between entities in an entity-relationship diagram.

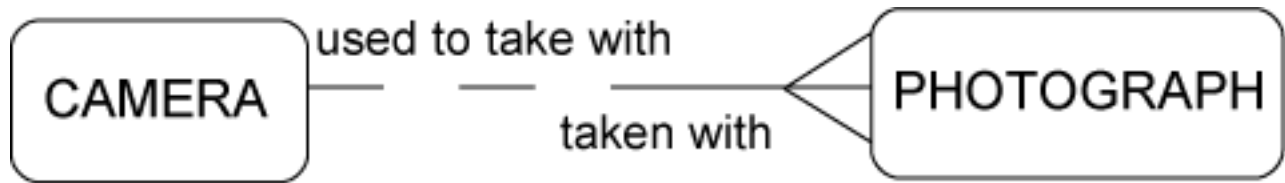
Try It / Solve It

1. The goal of this practice is to read a relationship. Which text corresponds to the diagram?

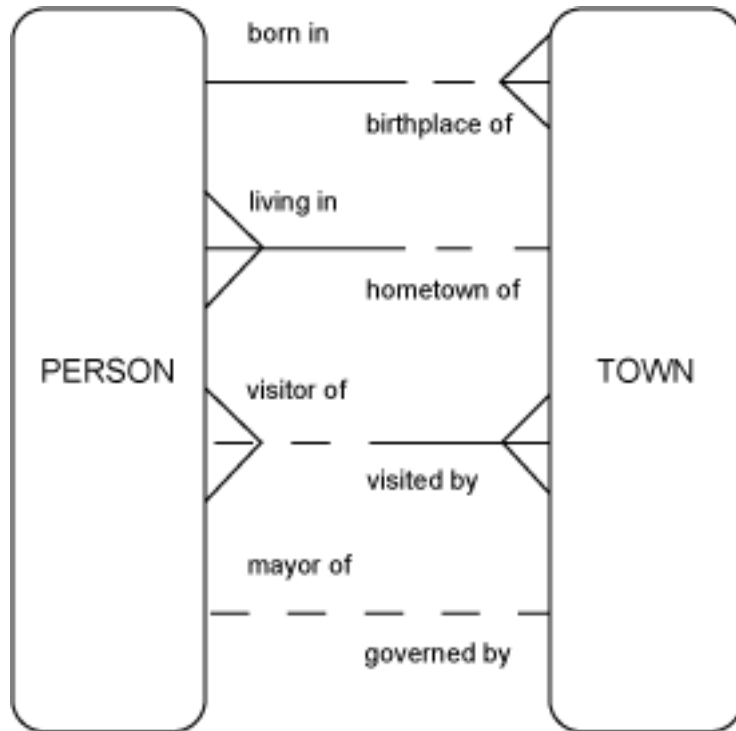


- A** Each EMPLOYEE may be assigned to one or more DEPARTMENTS.
Each DEPARTMENT must be responsible for one or more EMPLOYEES.
- B** Each EMPLOYEE must be assigned to one and only one DEPARTMENT.
Each DEPARTMENT must be responsible for one or more EMPLOYEES.
- C** Each EMPLOYEE must be assigned to exactly one DEPARTMENT.
Each DEPARTMENT may be responsible for exactly one EMPLOYEE.

2. In the diagram for #1 identify the symbols for cardinality/
3. In the diagram for #1 identify the symbols for optionality.
3. Read the relationship in the diagram below. Write the ERD statement for the relationship.



4. Read each of the relationships in the model below. Write the ERD statement and your thoughts on each relationship. Use your knowledge of people and towns.



5. (Optional Practice: Global Fast Foods)

This practice is step 1 in the Global Fast Foods project.